

UNSHIELDED SMD POWER INDUCTORS / FPI TYPE

FEATURES

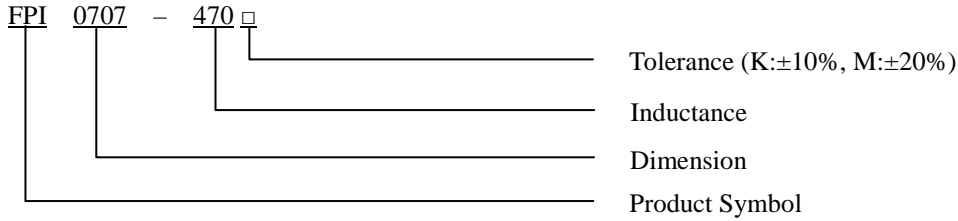
- ◆ Silver Plated Type
- ◆ High power and high saturation
- ◆ Ideal inductors for DC/DC conversion



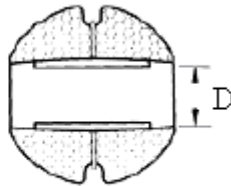
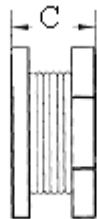
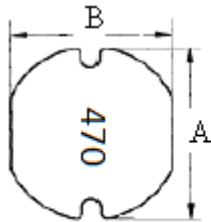
APPLICATIONS

- ◆ Power supply for VTRs.
- ◆ Portable communication equipment.
- ◆ Notebook PCs.
- ◆ LCD televisions.
- ◆ DC/DC converters, etc.

ORDERING CODE



DIMENSIONS (UNIT: mm)



A	7.8 ± 0.3	m/m
B	7.0 ± 0.3	m/m
C	7.0 ± 0.3	m/m
D	2.6 (REF)	m/m

CORE MASTER ENTERPRISE CO., LTD.

<http://www.coremaster.com.tw>



UNSHIELDED SMD POWER INDUCTORS / FPI TYPE

ELECTRICAL CHARACTERISTICS FOR FPI0707

Part No.	Inductance (uH)	RDC (Ω)	IDC (A)
FPI0707-330 □	33	0.140	3.00
FPI0707-470 □	47	0.170	2.50
FPI0707-151 □	150	0.600	1.30
FPI0707-221 □	220	0.800	1.10
FPI0707-801 □	800	2.600	0.54
FPI0707-102 □	1000	3.800	0.44
FPI0707-122 □	1200	4.300	0.40
FPI0707-152 □	1500	5.200	0.32

* 100uH 以上 Test Frequency : 1KHZ/1V

* 100uH 以下 Test Frequency : 2.52MHZ/1V